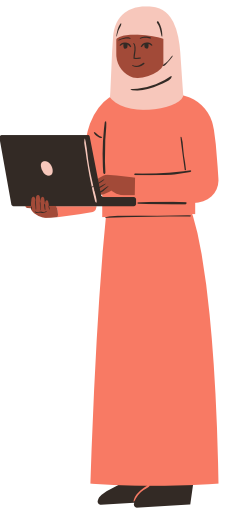


# KEY QUESTIONS FOR COMMUNITY-LED & GENDER-TRANSFORMATIVE BASELINE DATA COLLECTION



This resource is designed to help you integrate community leadership and gender-transformative principles into your baseline data collection. By reflecting on these key questions, you can promote inclusivity, address power dynamics, and support meaningful, lasting change for communities and individuals

## 01. ENGAGE LOCAL LEADERSHIP

- Can organizations with expertise in gender equality get involved in designing data collection tools/processes?
- Are local participants able to lead part of the research, data collection, and learning process?

## 02. EXAMINE ATTITUDES AND BIASES

- What steps are you taking to identify and mitigate biases in data collection and analysis?
- Have you reflected on your attitudes and power dynamics and how it could affect the data collection and analysis process?

## 03. STRENGTHEN LOCAL CAPACITY

- Can you build local evaluation and research capacity as part of the baseline data collection process?
- Have participants and community members helped define the purpose and use of the data collected?

## 04. INCORPORATE GENDER INSIGHTS

- Have you included questions that explore gender roles, power relations, and societal norms?
- Can you add questions that capture changes in power dynamics and potential backlash to gender equality?

## 05. TEST FOR INCLUSIVITY

- Can you test the data collection tools with a diverse group of participants (gender, age, intersectional differences)?
- How will you take into account differences in understanding and acceptance of questions during the pilot phase?

## 06. USE FINDINGS FOR IMPACT

- How can the research findings be used to support gender equality and transformative change?
- What would it look like for local community members to directly benefit from data collection processes and findings?

## 07. PRIORITIZE ETHICS AND CONFIDENTIALITY

- Does data collection activities respect the rights and confidentiality of participants, particularly in sensitive gender-related areas?
- How will you address potential ethical concerns that are identified through participant feedback?

## 08. FOSTER PARTNERSHIPS

- Are there other NGOs or community-based organizations that you can collaborate with on the data collection and learning process in order to amplify the value and use of data collection efforts?